

# MADISON AVENUE CORRIDOR IMPROVEMENTS OPEN HOUSE 11.2.17



**GREENWOOD**

EST 1864

DESIGN LEAD



# MADISON AVENUE CORRIDOR IMPROVEMENTS OPEN HOUSE

Introductions

Presentation

- Master Plan and Process
- Phase 1 Design
- Schedule

Breakout Stations

- Q/A



photo: restore old town greenwood

# DOWNTOWN DEVELOPMENT MASTER PLAN

## Goals

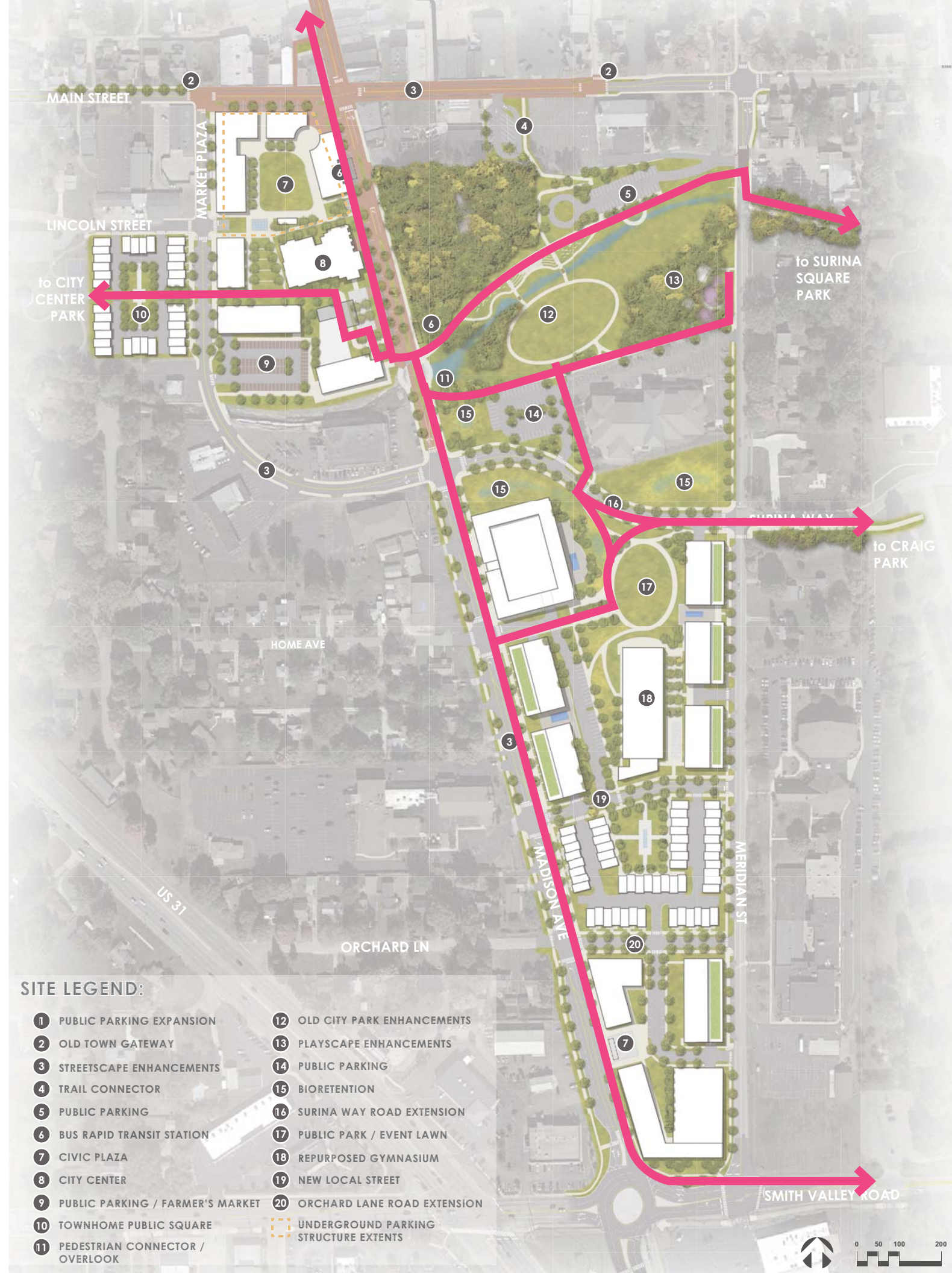
- Facilitate downtown revival
- Diverse amenities
- Destinations in and around unique public spaces



# DOWNTOWN DEVELOPMENT MASTER PLAN TRAIL NETWORK

## Connectivity

- Multi-use trails
- Cycletracks
- Network for parks, residences, commercial, commuting
- Triple bottom line





**COMMUNITY**

**OFFICE**



**RETAIL**



**RESTAURANTS**



**LOCAL**



# MADISON AVE MASTER PLAN

## existing conditions

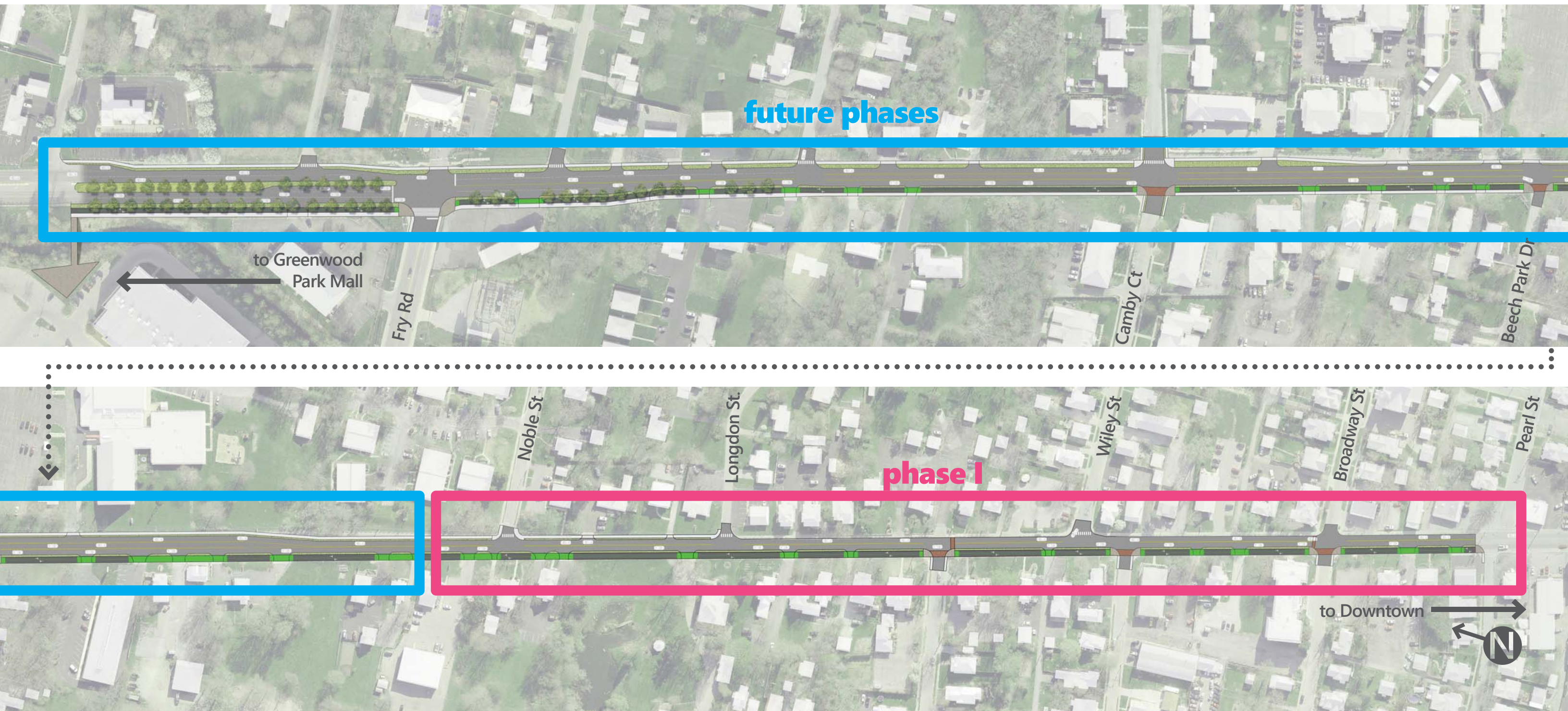
- varying number of travel lanes at 12'+ widths
- narrow sidewalks
- lack of sidewalks
- lack of multi-modal connection

## opportunities

- complete street
- increase safety by traffic calming through street right sizing
- create unique and connective corridor between city anchors



# MADISON AVE MASTER PLAN PHASING



future phases

to Greenwood  
Park Mall

phase I

to Downtown



# MADISON AVE PHASE I PLAN



**a.** multi-use trail

**b.** enhanced trail crosswalk

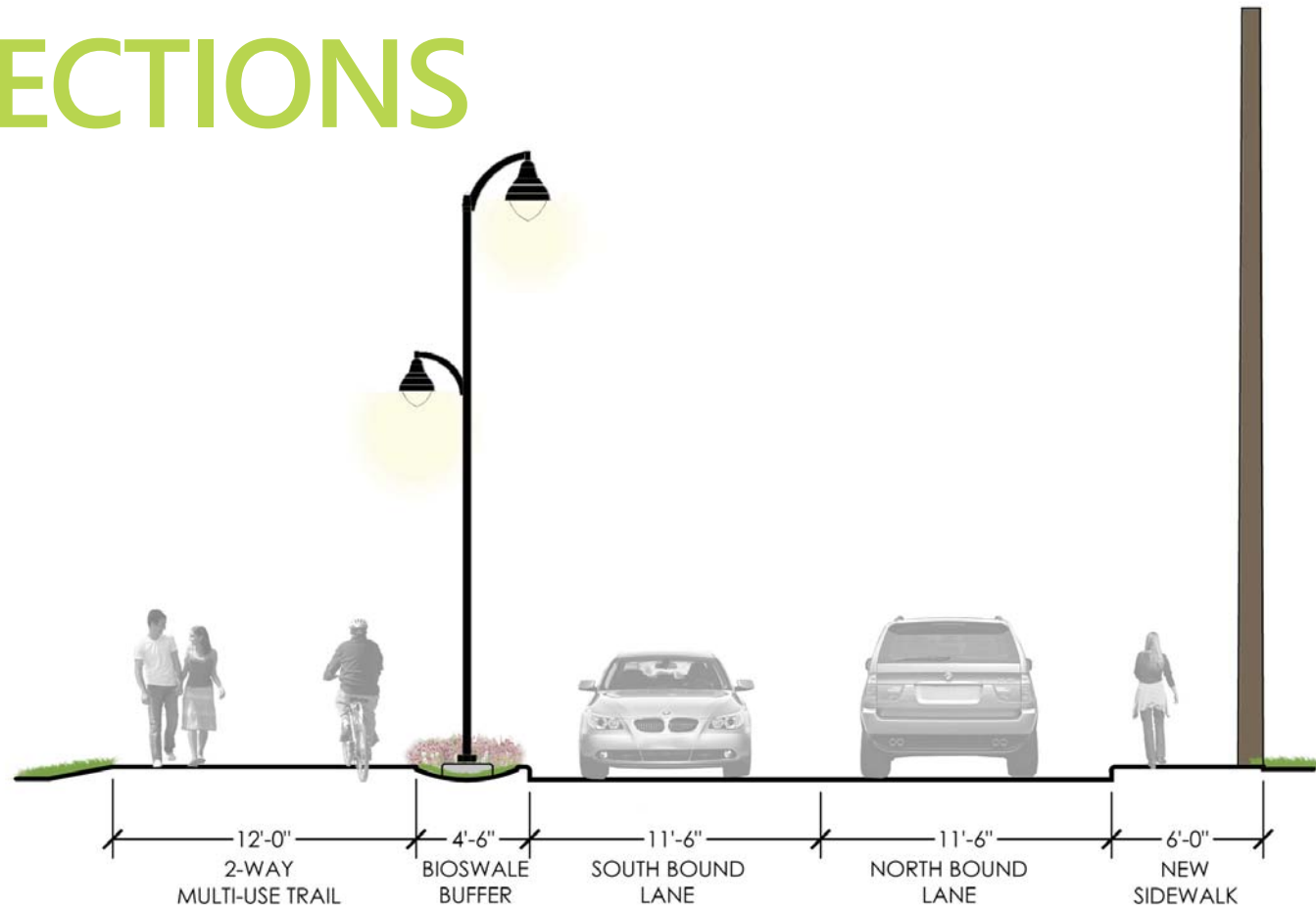
**c.** madison ave marked pedestrian crossing zones

**d.** east sidewalk addition

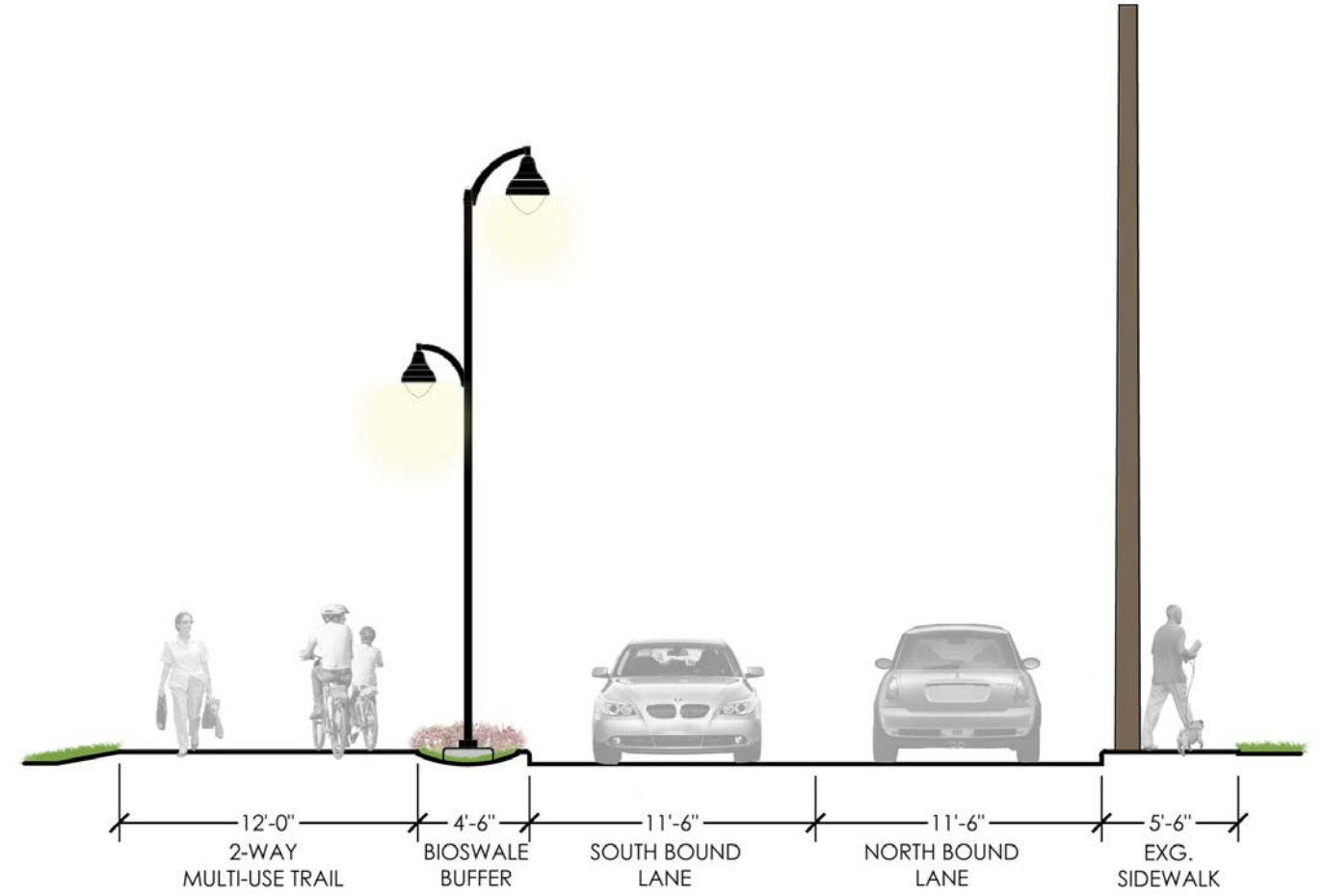
**e.** drive/ intersection approaches



# MADISON AVE PHASE I SECTIONS



**a.** Noble St to Longdon St (~50' right of way)



**b.** Longdon St to Pearl St (~50' right of way)



# MADISON AVE PHASE I DESIGN ELEMENTS



# MADISON AVE PHASE I DESIGN ELEMENTS



# MADISON AVE PHASE I SCHEDULE

## Final Construction Documents

- January 2018

## Bids Received

- February 2018

## Construction (tentative)

- April 2018 - September 2018



# MADISON AVE PHASE I BREAKOUT STATIONS



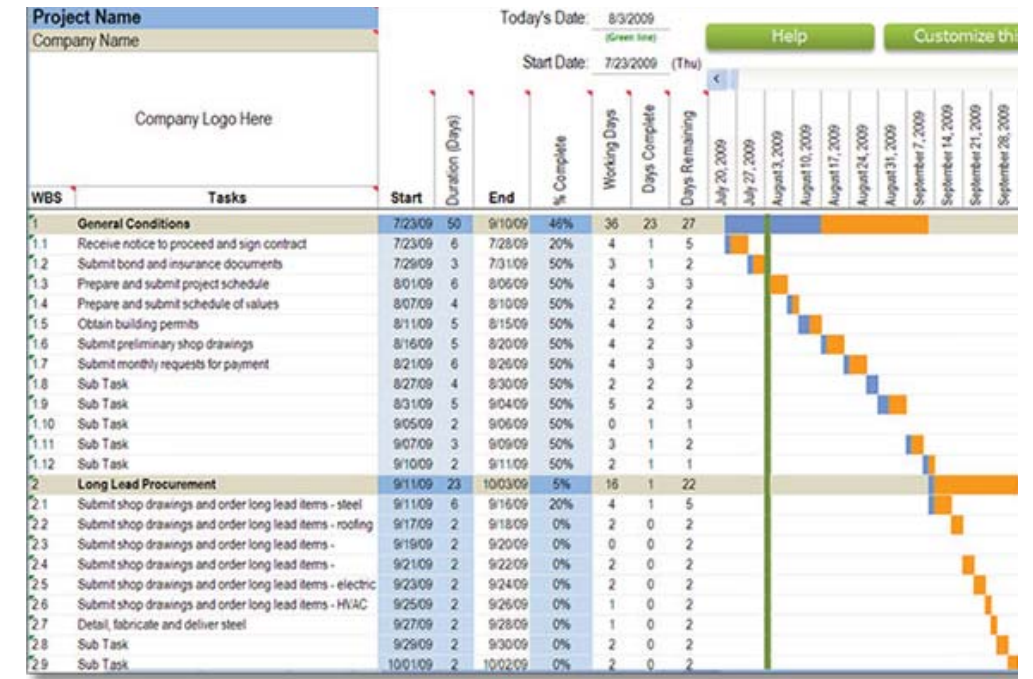
## #1

### MASTER PLAN



## #2

### DESIGN ELEMENTS



## #3

### CONSTRUCTION TIMELINE