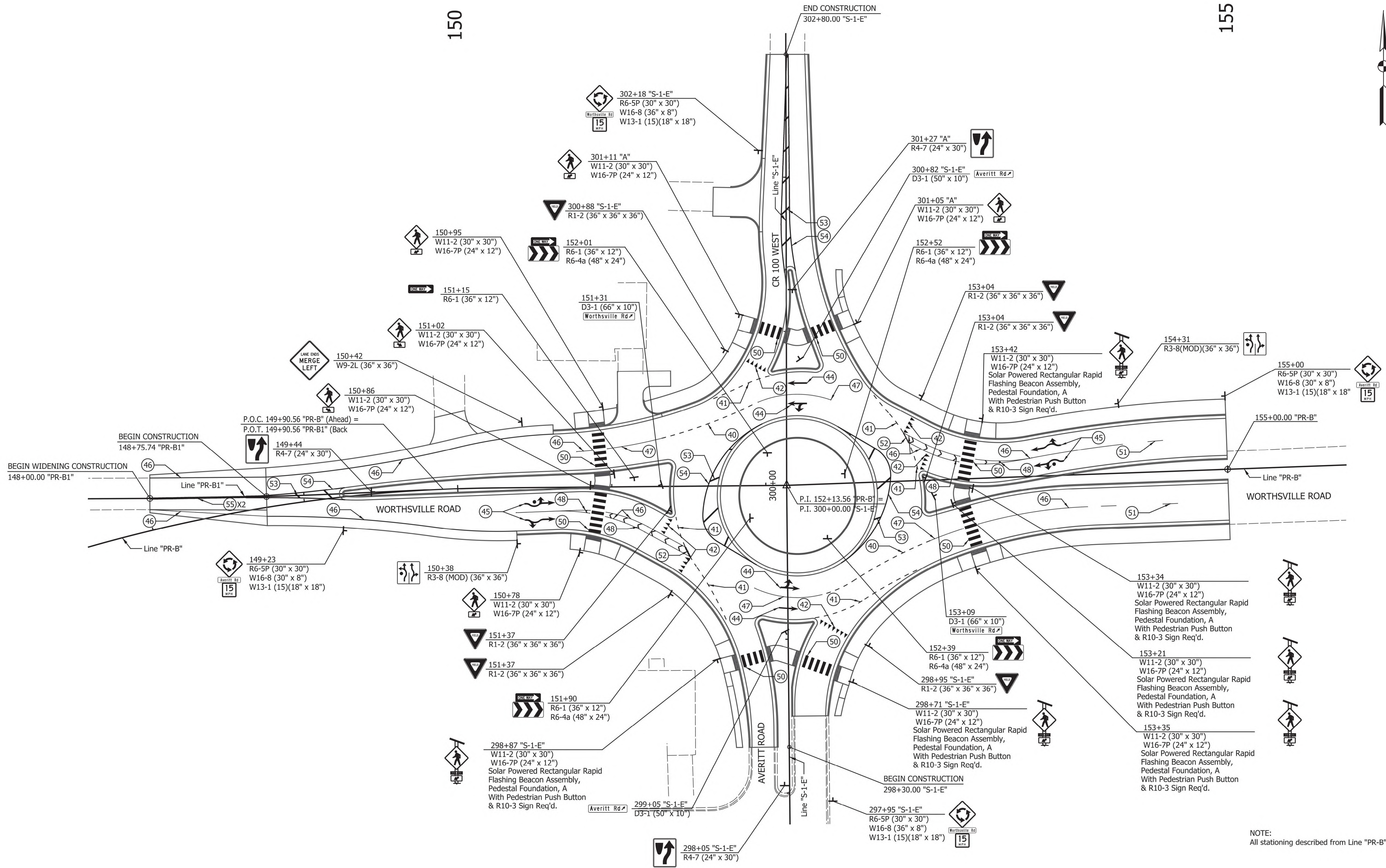


150

155



NOTE:  
All stationing described from Line "PR-B" unless otherwise noted.

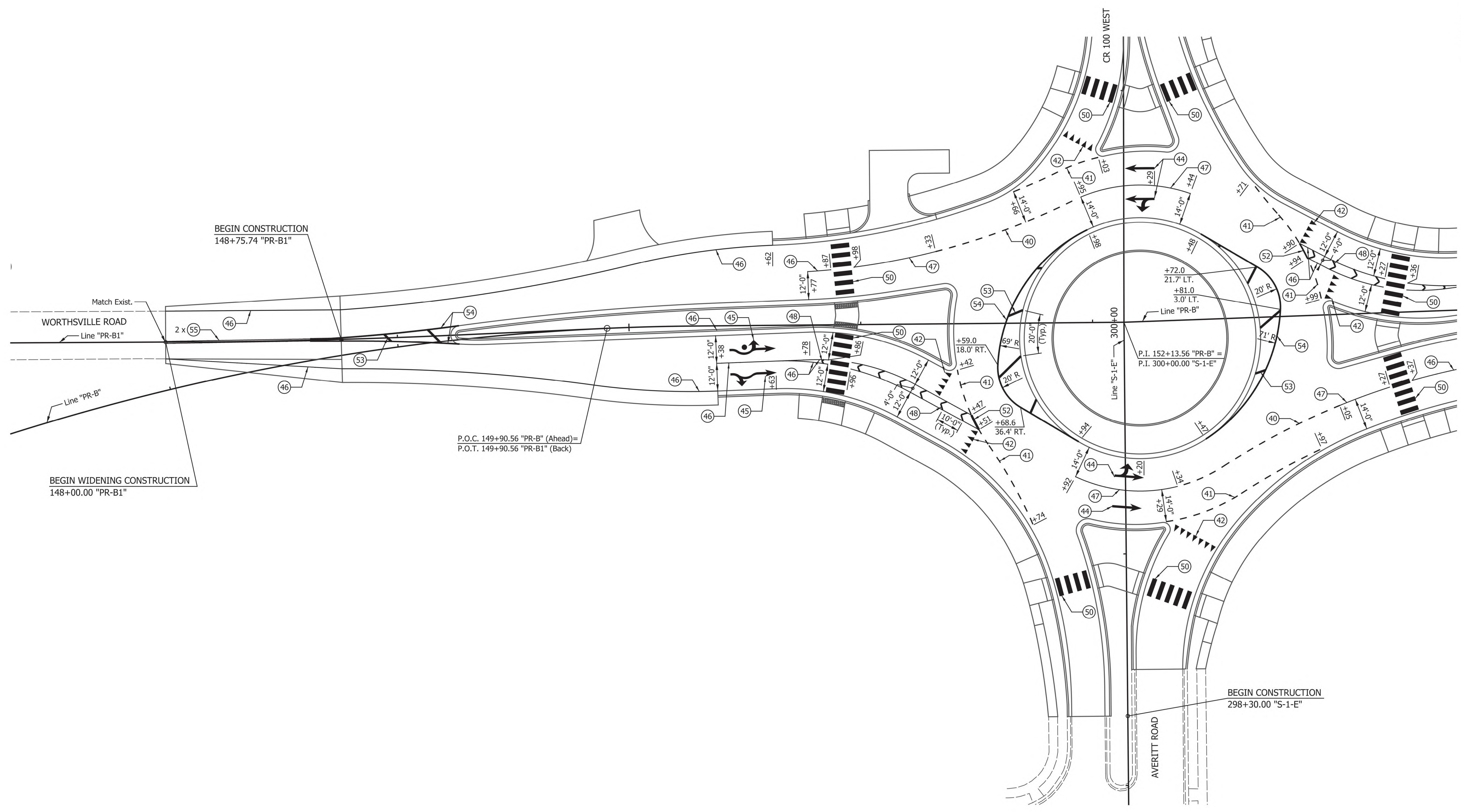
| LEGEND   |   |
|--|---|
| 40 Line, Thermoplastic, Dotted, White, 6 in. (2' Line, 4' Gap)                       | 46 Line, Thermoplastic, Solid, White, 4 in.                         |
| 41 Line, Thermoplastic, Dotted, White, 12 in. (3' Line, 3' Gap)                      | 47 Line, Thermoplastic, Solid, White, 6 in.                         |
| 42 "Sharks Teeth", Yield Line, White   | 48 Transverse Marking, Thermoplastic, Crosshatch Line, White, 8 in. |
| 44 Pavement Message Marking, Thermoplastic, Lane Indication Arrow, White             | 50 Transverse Marking, Thermoplastic, Crosswalk, White, 24"         |
| 45 Pavement Message Marking, Thermoplastic, Lane Indication Arrow, "Fishhook", White | 51 Line, Thermoplastic, Broken, White 4 in.                         |
|  | 52 Line, Thermoplastic, Solid, White 12"                            |
|  | 53 Transverse Marking, Thermoplastic, Crosshatch Line, Yellow, 12"  |
|  | 54 Line, Thermoplastic, Solid, Yellow, 8"                           |
|  | 55 Line, Thermoplastic, Solid, Yellow, 4"                           |

REGISTERED  
No. 11400799  
STATE OF INDIANA  
PROFESSIONAL ENGINEER

RECOMMENDED FOR APPROVAL *[Signature]* 5/17/2019  
DESIGN ENGINEER DATE

DESIGNED: JKH DRAWN: RJC  
CHECKED: NRM CHECKED: NRM

|   |  |                              |                        |
|---|--|------------------------------|------------------------|
| INDIANA DEPARTMENT OF TRANSPORTATION          |  | HORIZONTAL SCALE<br>1" = 30' | BRIDGE FILE            |
| ROUNDABOUT PAVEMENT MARKINGS AND SIGN DETAILS |  | VERTICAL SCALE<br>N/A        | DESIGNATION<br>1401610 |
|   |  | SURVEY BOOK<br>R-37985       | SHEETS<br>92 of 156    |
|   |  | CONTRACT                     | PROJECT<br>1401610     |



P.O.C. 149+90.56 "PR-B" (Ahead)=  
P.O.T. 149+90.56 "PR-B1" (Back)

BEGIN CONSTRUCTION  
148+75.74 "PR-B1"

BEGIN WIDENING CONSTRUCTION  
148+00.00 "PR-B1"

BEGIN CONSTRUCTION  
298+30.00 "S-1-E"

NOTE:  
All stationing described from Line "PR-B" unless otherwise noted.

| LEGEND   |   |  |
|--|---|--|
| (40) Line, Thermoplastic, Dotted, White, 6 in. (2' Line, 4' Gap)                       | (46) Line, Thermoplastic, Solid, White, 4 in.                         | (51) Line, Thermoplastic, Broken, White 4 in.                        |
| (41) Line, Thermoplastic, Dotted, White, 12 in. (3' Line, 3' Gap)                      | (47) Line, Thermoplastic, Solid, White, 6 in.                         | (52) Line, Thermoplastic, Solid, White 12"                           |
| (42) "Sharks Teeth", Yield Line, White   | (48) Transverse Marking, Thermoplastic, Crosshatch Line, White, 8 in. | (53) Transverse Marking, Thermoplastic, Crosshatch Line, Yellow, 12" |
| (44) Pavement Message Marking, Thermoplastic, Lane Indication Arrow, White             | (50) Transverse Marking, Thermoplastic, Crosswalk, White, 24"         | (54) Line, Thermoplastic, Solid, Yellow, 8"                          |
| (45) Pavement Message Marking, Thermoplastic, Lane Indication Arrow, "Fishhook", White |   | (55) Line, Thermoplastic, Solid, Yellow, 4"                          |

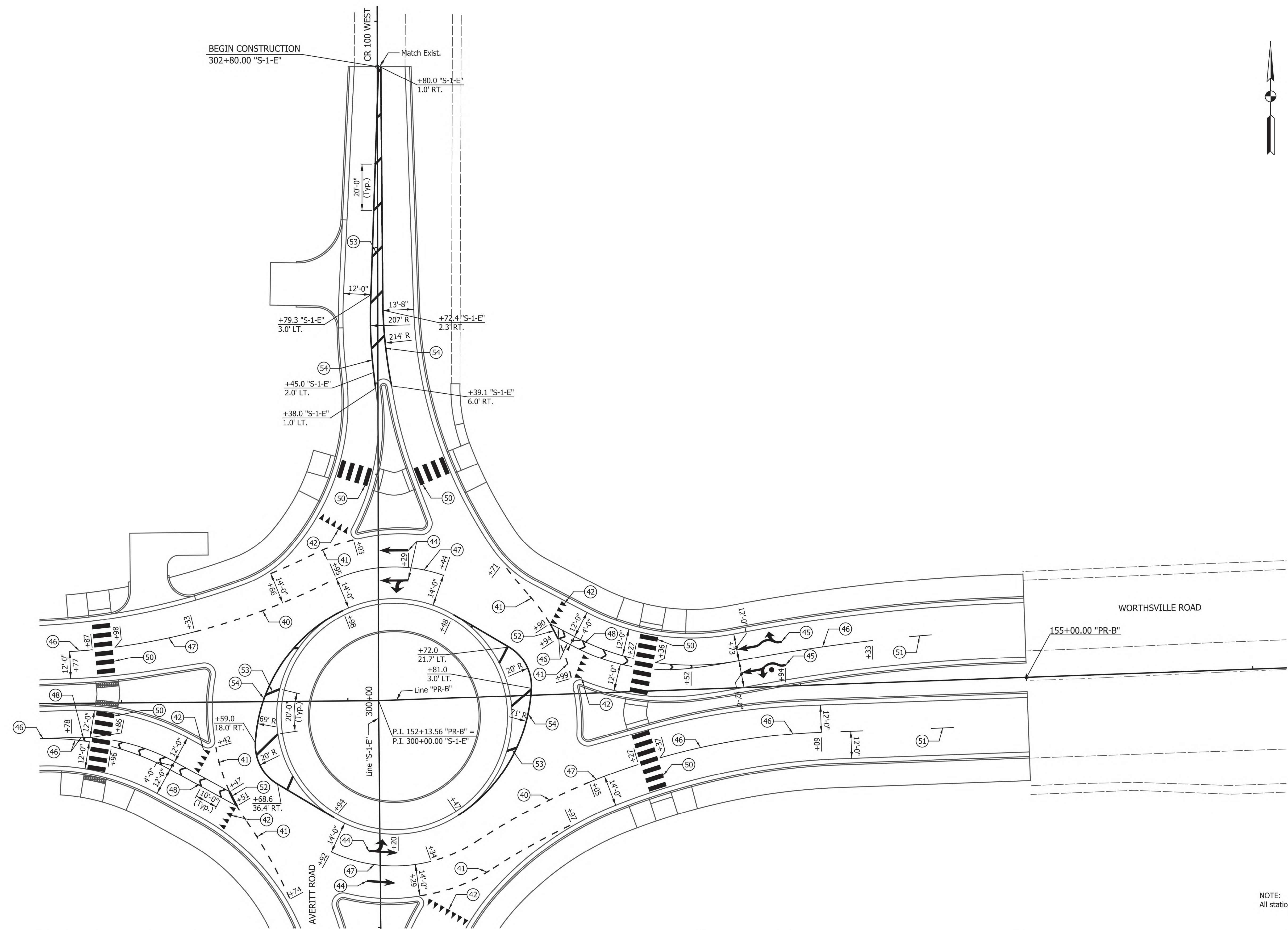


|                          |                    |           |
|--------------------------|--------------------|-----------|
| RECOMMENDED FOR APPROVAL | <i>[Signature]</i> | 5/17/2019 |
| DESIGNED:                | JKH                | DATE      |
| DRAWN:                   | RJC                |           |
| CHECKED:                 | NRM                |           |
|                          | NRM                |           |

INDIANA  
DEPARTMENT OF TRANSPORTATION

ROUNDABOUT  
PAVEMENT MARKING AND SIGN DETAILS

|                  |             |
|------------------|-------------|
| HORIZONTAL SCALE | BRIDGE FILE |
| 1"=20'           |             |
| VERTICAL SCALE   | DESIGNATION |
| N/A              | 1401610     |
| SURVEY BOOK      | SHEETS      |
|                  | 93 of 156   |
| CONTRACT         | PROJECT     |
| R-37985          | 1401610     |



| LEGEND   |   |
|--|---|
| 40 Line, Thermoplastic, Dotted, White, 6 in. (2' Line, 4' Gap)                       | 46 Line, Thermoplastic, Solid, White, 4 in.                         |
| 41 Line, Thermoplastic, Dotted, White, 12 in. (3' Line, 3' Gap)                      | 47 Line, Thermoplastic, Solid, White, 6 in.                         |
| 42 "Sharks Teeth", Yield Line, White   | 48 Transverse Marking, Thermoplastic, Crosshatch Line, White, 8 in. |
| 44 Pavement Message Marking, Thermoplastic, Lane Indication Arrow, White             | 49 Transverse Marking, Thermoplastic, Crosswalk, White, 24"         |
| 45 Pavement Message Marking, Thermoplastic, Lane Indication Arrow, "Fishhook", White |   |
| 51 Line, Thermoplastic, Broken, White 4 in.  | 52 Line, Thermoplastic, Solid, White 12"                            |
| 53 Transverse Marking, Thermoplastic, Crosshatch Line, Yellow, 12"                   | 54 Line, Thermoplastic, Solid, Yellow, 8"                           |
| 54 Line, Thermoplastic, Solid, Yellow, 8"  | 55 Line, Thermoplastic, Solid, Yellow, 4"                           |

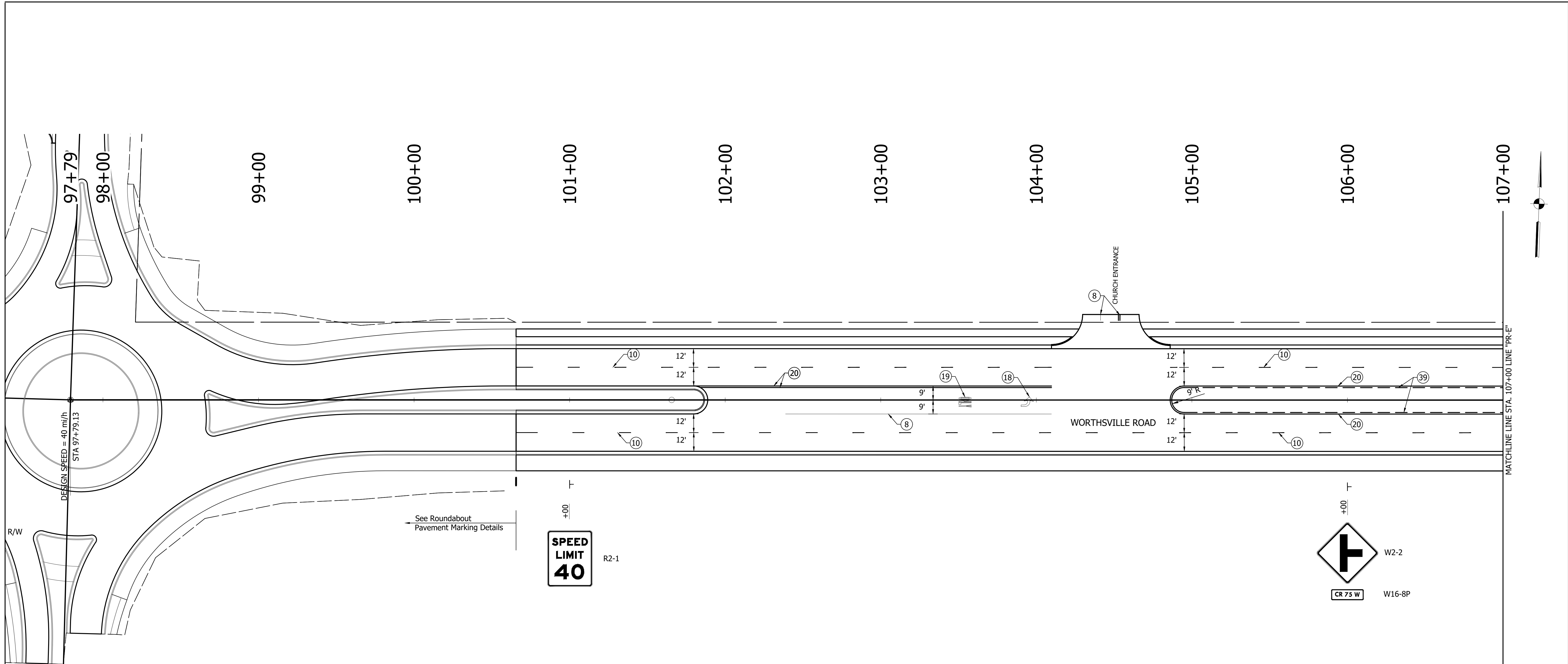


|                          |                    |           |
|--------------------------|--------------------|-----------|
| RECOMMENDED FOR APPROVAL | <i>[Signature]</i> | 5/17/2019 |
| DESIGNED:                | JKH                | DATE      |
| DRAWN:                   | RJC                |           |
| CHECKED:                 | NRM                |           |
|                          | NRM                |           |

INDIANA  
DEPARTMENT OF TRANSPORTATION

ROUNDABOUT  
PAVEMENT MARKING AND SIGN DETAILS

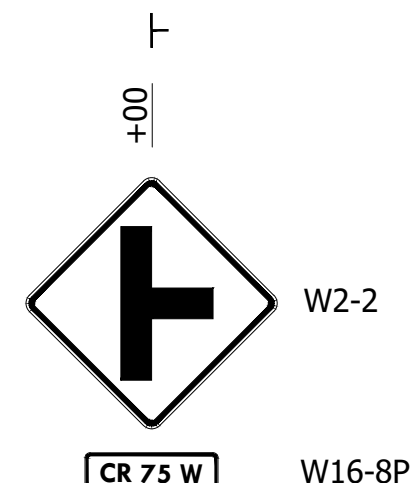
|                  |             |
|------------------|-------------|
| HORIZONTAL SCALE | BRIDGE FILE |
| 1"=20'           |             |
| VERTICAL SCALE   | DESIGNATION |
| N/A              | 1401610     |
| SURVEY BOOK      | SHEETS      |
|                  | 94 of 156   |
| CONTRACT         | PROJECT     |
| R-37985          | 1401610     |



See Roundabout  
Pavement Marking Details



R2-1



W2-2

W16-8P

**LEGEND**

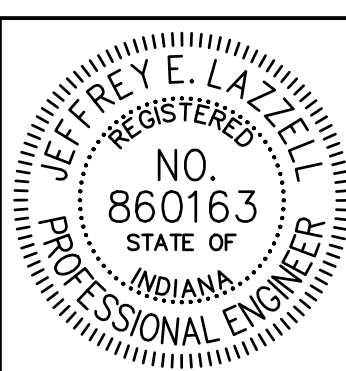
- ④ Transverse Marking, Multi - Comp., Stop Line, White, 24"
- ⑤ Transverse Marking, Thermoplastic, Stop Line, White, 24"
- ⑥ Line, Thermoplastic, Solid, Yellow, 8"
- ⑦ Transverse Marking, Thermoplastic, Crosshatch Line, Yellow, 12"
- ⑧ Line, Thermoplastic, Solid, White, 4"
- ⑨ Line, Thermoplastic, Broken, White, 5"
- ⑩ Line, Thermoplastic, Broken, White, 4"
- ⑪ Line, Thermoplastic, Dotted, White, 5"
- ⑫ Line, Thermoplastic, Dotted, White, 4"
- ⑬ Line, Thermoplastic, Solid, White, 8"
- ⑭ Line, Thermoplastic, Solid, White, 24"
- ⑮ Transverse Marking, Thermoplastic, Crosswalk Line, White, 6"
- ⑯ Transverse Marking, Thermoplastic, Crosswalk Line, White, 24"
- ⑰ Transverse Marking, Thermoplastic, Yield, White, 27"
- ⑱ Pavement Message Marking, Thermoplastic, Lane Indication Arrow
- ⑲ Pavement Message Marking, Thermoplastic, Word (ONLY)
- ⑳ Line, Thermoplastic, Solid, Yellow, 4"
- ㉑ Line, Multi-Component, Solid, White, 4"
- ㉒ Line, Multi-Component, Dotted, White, 4" (2' line, 6'gap)
- ㉓ Line, Multi-Component, Solid, Yellow, 4"
- ㉔ Pavement Message Marking, Multi-Component, Lane Indication Arrow
- ㉕ Line, Multi-Component, Broken, White, 4"
- ㉖ Transverse Marking, Multi-Component, Crosswalk Line, White, 6"
- ㉗ Line, Multi-Component, Dotted, Yellow, 4" (2' line, 6'gap)
- ㉘ Line, Thermoplastic, Dotted, White 4" (2'line, 6'gap)
- ㉙ Line, Thermoplastic, Dotted, Yellow, 4" (2'line, 6'gap)
- ㉚ Line, Thermoplastic, Broken, Yellow, 4"
- ㉛ Transverse Marking, Thermoplastic, Crosshatch Line, White, 24"

▶ Traffic Flow Direction

File Name: pr:\CADD\12-108\Roundabout\Plan\PR-E.dwg Plot Date: 7/21/2019 Plotter: HP-DesignJet 5000PS Printer: HP DesignJet 5000PS



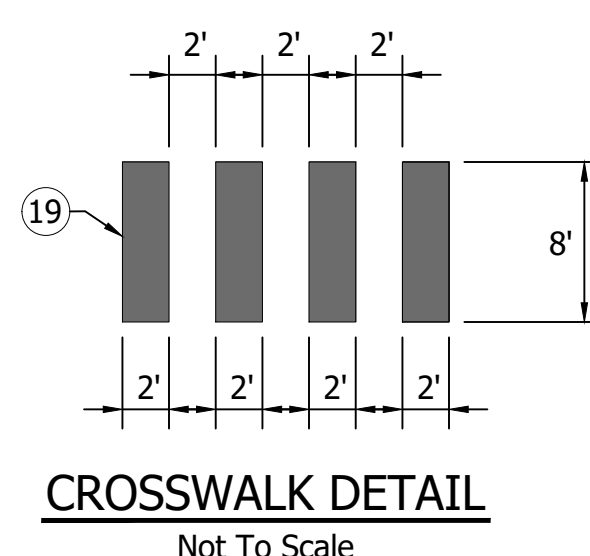
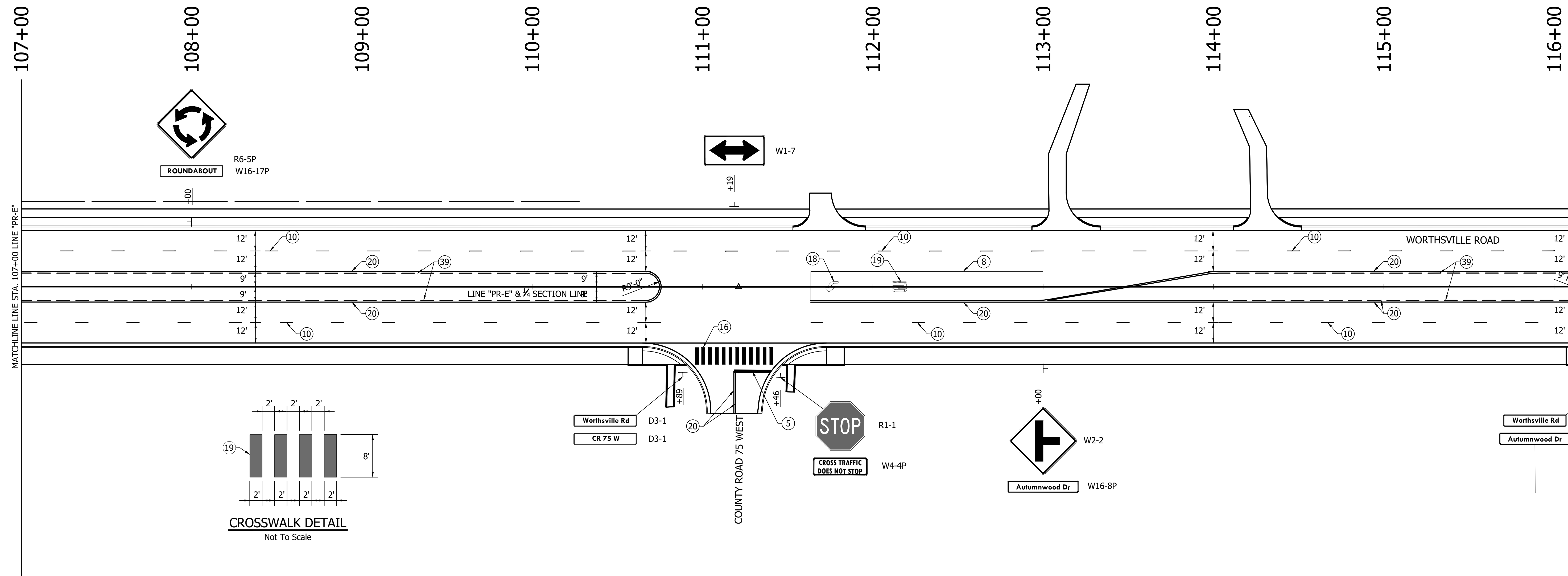
8440 Allison Pointe Boulevard, Suite 200  
Indianapolis, IN 46250  
Phone 317-895-2585  
www.ucindy.com



|                          |                                 |                 |      |
|--------------------------|---------------------------------|-----------------|------|
| RECOMMENDED FOR APPROVAL | <i>Jeffrey E. Lazell</i> 7/1/19 | DESIGN ENGINEER | DATE |
| DESIGNED: RBI            | DRAWN: VAD                      |                 |      |
| CHECKED: JEL             | CHECKED: RBI                    |                 |      |

INDIANA  
DEPARTMENT OF TRANSPORTATION  
PAVEMENT MARKING & SIGNING PLAN  
LINE "PR-E"

|                  |             |
|------------------|-------------|
| HORIZONTAL SCALE | BRIDGE FILE |
| 1" = 30'         | -           |
| VERTICAL SCALE   | DESIGNATION |
| N/A              | 1401610     |
| SURVEY BOOK      | SHEETS      |
| -                | 95 of 156   |
| CONTRACT         | PROJECT     |
| R-37985          | 1401610     |



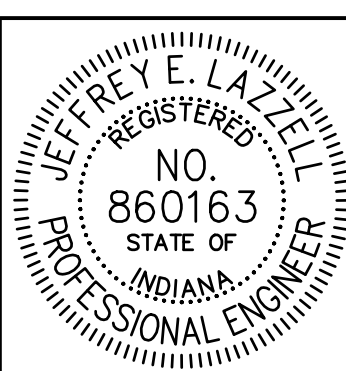
**LEGEND**

- ④ Transverse Marking, Multi - Comp., Stop Line, White, 24"
- ⑤ Transverse Marking, Thermoplastic, Stop Line, White, 24"
- ⑥ Line, Thermoplastic, Solid, Yellow, 8"
- ⑦ Transverse Marking, Thermoplastic, Crosshatch Line, Yellow, 12"
- ⑧ Line, Thermoplastic, Solid, White, 4"
- ⑨ Line, Thermoplastic, Broken, White, 5"
- ⑩ Line, Thermoplastic, Broken, White, 4"
- ⑪ Line, Thermoplastic, Dotted, White, 5"
- ⑫ Line, Thermoplastic, Dotted, White, 4"
- ⑬ Line, Thermoplastic, Solid, White, 8"
- ⑭ Line, Thermoplastic, Solid, White, 24"
- ⑮ Transverse Marking, Thermoplastic, Crosswalk Line, White, 6"
- ⑯ Transverse Marking, Thermoplastic, Crosswalk Line, White, 24"
- ⑰ Transverse Marking, Thermoplastic, Yield, White, 27"
- ⑱ Pavement Message Marking, Thermoplastic, Lane Indication Arrow
- ⑲ Pavement Message Marking, Thermoplastic, Word (ONLY)
- ⑳ Line, Thermoplastic, Solid, Yellow, 4"
- ㉑ Line, Multi-Component, Solid, White, 4"
- ㉒ Line, Multi-Component, Dotted, White, 4" (2' line, 6'gap)
- ㉓ Line, Multi-Component, Solid, Yellow, 4"
- ㉔ Line, Thermoplastic, Solid, White, 24"
- ㉕ Transverse Marking, Thermoplastic, Crosswalk Line, White, 6"
- ㉖ Transverse Marking, Multi-Component, Crosswalk Line, White, 6"
- ㉗ Line, Multi-Component, Dotted, Yellow, 4" (2' line, 6'gap)
- ㉘ Line, Thermoplastic, Dotted, White 4" (2'line, 6'gap)
- ㉙ Line, Thermoplastic, Dotted, Yellow, 4" (2'line, 6'gap)
- ㉚ Line, Thermoplastic, Broken, Yellow, 4"
- ㉛ Transverse Marking, Thermoplastic, Crosshatch Line, White, 24"
- ㉜ Traffic Flow Direction
- ㉝ Pavement Message Marking, Multi-Component, Lane Indication Arrow
- ㉞ Line, Multi-Component, Broken, White, 4"
- ㉟ Transverse Marking, Multi-Component, Crosswalk Line, White, 6"
- ㊱ Line, Multi-Component, Dotted, Yellow, 4" (2' line, 6'gap)
- ㊲ Line, Thermoplastic, Dotted, White 4" (2'line, 6'gap)
- ㊳ Line, Thermoplastic, Dotted, Yellow, 4" (2'line, 6'gap)
- ㊴ Line, Thermoplastic, Broken, Yellow, 4"
- ㊵ Transverse Marking, Thermoplastic, Crosshatch Line, White, 24"

File Name: p:\CSD\13-118\Road\Drawings\Plans\PH&E III\Sign Mark\_Plan.dwg Plot Date: 7/21/2019 Plotted By: VC Dobson



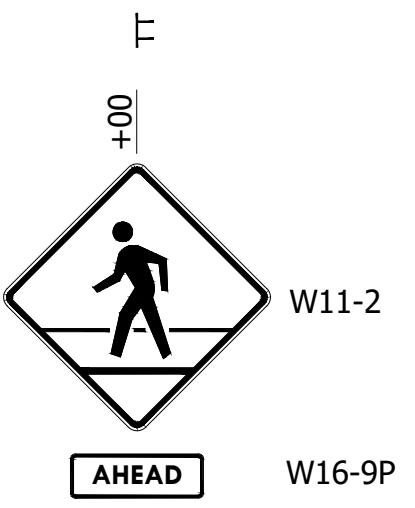
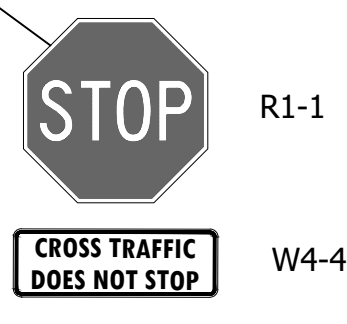
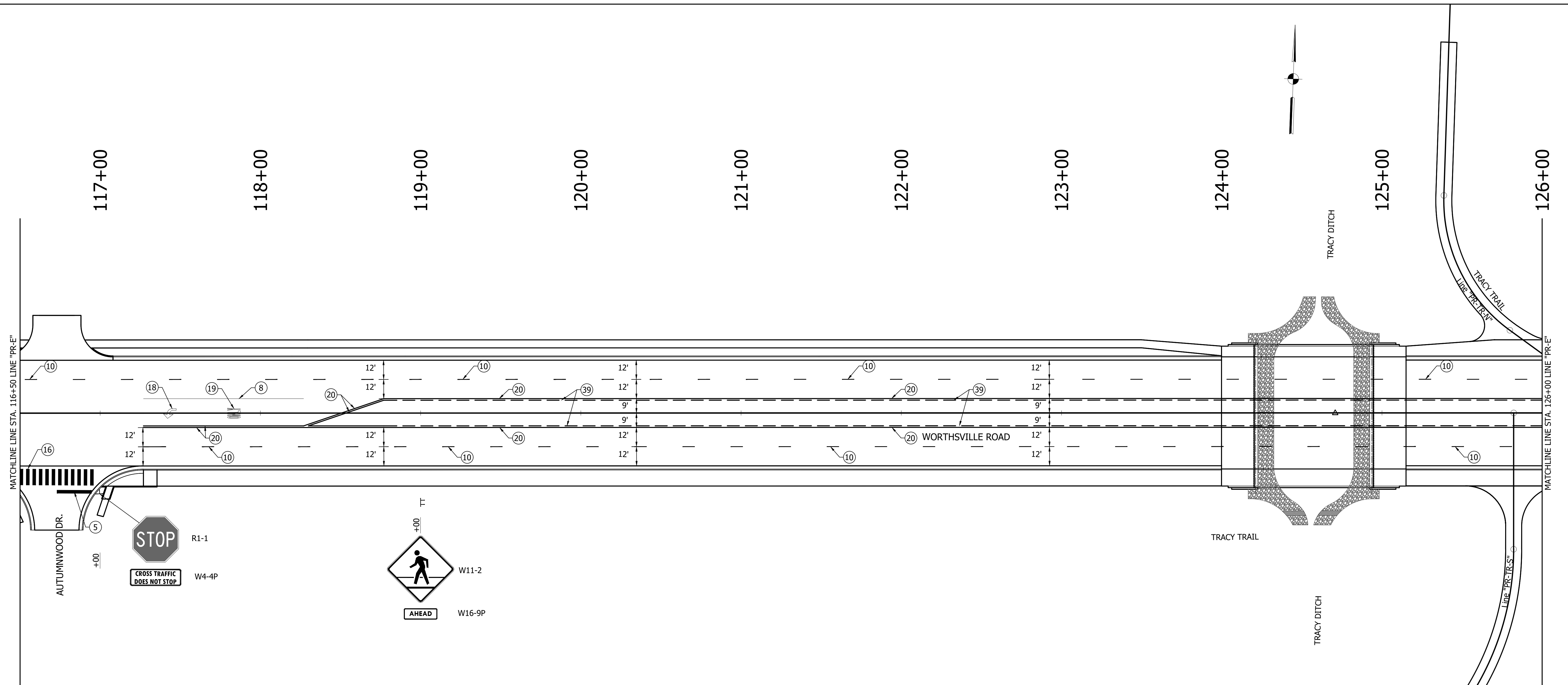
8440 Allison Pointe Boulevard, Suite 200  
Indianapolis, IN 46250  
Phone 317-895-2585  
www.ucindy.com



|                          |                          |        |
|--------------------------|--------------------------|--------|
| RECOMMENDED FOR APPROVAL | <i>Jeffrey E. LaZell</i> | 7/1/19 |
| DESIGNED: RBI            | DRAWN: VAD               | DATE   |
| CHECKED: JEL             | CHECKED: RBI             |        |

INDIANA  
DEPARTMENT OF TRANSPORTATION  
PAVEMENT MARKING & SIGNING PLAN  
LINE "PR-E"

|                  |             |
|------------------|-------------|
| HORIZONTAL SCALE | BRIDGE FILE |
| N/A              | -           |
| VERTICAL SCALE   | DESIGNATION |
| N/A              | 1401610     |
| SURVEY BOOK      | SHEETS      |
| -                | 96 of 156   |
| CONTRACT         | PROJECT     |
| R-37985          | 1401610     |



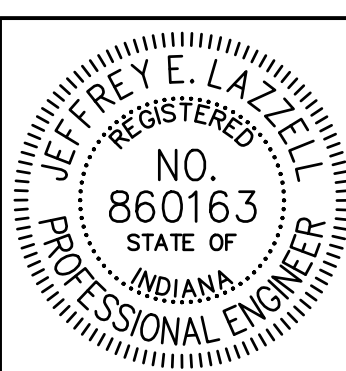
**LEGEND**

- ④ Transverse Marking, Multi - Comp., Stop Line, White, 24"
- ⑤ Transverse Marking, Thermoplastic, Stop Line, White, 24"
- ⑥ Line, Thermoplastic, Solid, Yellow, 8"
- ⑦ Transverse Marking, Thermoplastic, Crosshatch Line, Yellow, 12"
- ⑧ Line, Thermoplastic, Solid, White, 4"
- ⑨ Line, Thermoplastic, Broken, White, 5"
- ⑩ Line, Thermoplastic, Broken, White, 4"
- ⑪ Line, Thermoplastic, Dotted, White, 5"
- ⑫ Line, Thermoplastic, Dotted, White, 4"
- ⑬ Line, Thermoplastic, Solid, White, 8"
- ⑭ Line, Thermoplastic, Solid, White, 24"
- ⑮ Transverse Marking, Thermoplastic, Crosswalk Line, White, 6"
- ⑯ Transverse Marking, Thermoplastic, Crosswalk Line, White, 24"
- ⑰ Transverse Marking, Thermoplastic, Yield, White, 27"
- ⑱ Pavement Message Marking, Thermoplastic, Lane Indication Arrow
- ⑲ Pavement Message Marking, Thermoplastic, Word (ONLY)
- ⑳ Line, Thermoplastic, Solid, Yellow, 4"
- ㉑ Line, Multi-Component, Solid, White, 4"
- ㉒ Line, Multi-Component, Dotted, White, 4" (2' line, 6'gap)
- ㉓ Line, Multi-Component, Solid, Yellow, 4"
- ㉔ Pavement Message Marking, Multi-Component, Lane Indication Arrow
- ㉕ Line, Multi-Component, Broken, White, 4"
- ㉖ Transverse Marking, Multi-Component, Crosswalk Line, White, 6"
- ㉗ Line, Multi-Component, Dotted, Yellow, 4" (2' line, 6'gap)
- ㉘ Line, Thermoplastic, Dotted, White 4" (2'line, 6'gap)
- ㉙ Line, Thermoplastic, Dotted, Yellow, 4" (2'line, 6'gap)
- ㉚ Line, Thermoplastic, Broken, Yellow, 4"
- ㉛ Transverse Marking, Thermoplastic, Crosshatch Line, White, 24"
- ▶ Traffic Flow Direction

File Name: p:\CSD\13-418\Road\Draw\Plans\PHASE III\Sign Mark\_Plan.dwg Plot Date: 7/21/2019 Plotted By: VC Dobson



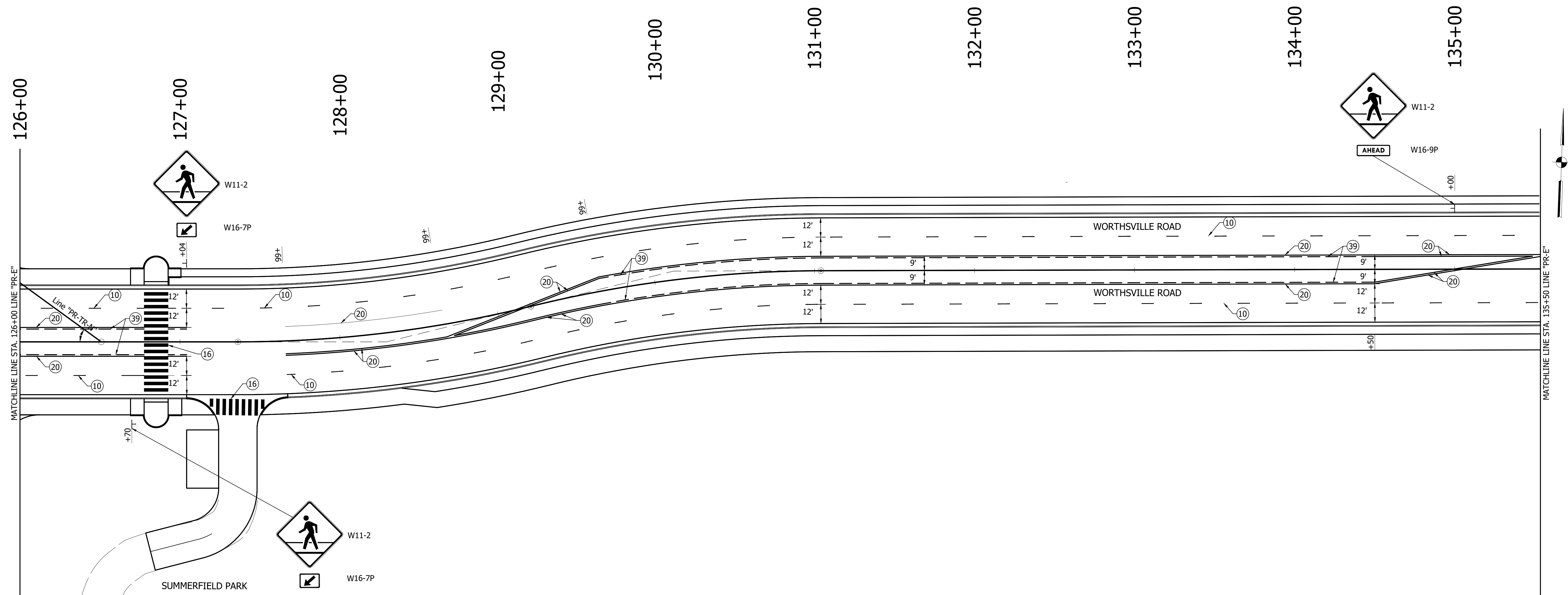
8440 Allison Pointe Boulevard, Suite 200  
Indianapolis, IN 46250  
Phone 317-895-2585  
www.ucindy.com



|                          |                                 |                 |      |
|--------------------------|---------------------------------|-----------------|------|
| RECOMMENDED FOR APPROVAL | <i>Jeffrey E. LaZell</i> 7/1/19 | DESIGN ENGINEER | DATE |
| DESIGNED: RBI            | DRAWN: VAD                      |                 |      |
| CHECKED: JEL             | CHECKED: RBI                    |                 |      |

INDIANA  
DEPARTMENT OF TRANSPORTATION  
PAVEMENT MARKING & SIGNING PLAN  
LINE "PR-E"

|                  |             |
|------------------|-------------|
| HORIZONTAL SCALE | BRIDGE FILE |
| 1" = 30'         | -           |
| VERTICAL SCALE   | DESIGNATION |
| N/A              | 1401610     |
| SURVEY BOOK      | SHEETS      |
| -                | 97 of 156   |
| CONTRACT         | PROJECT     |
| R-37985          | 1401610     |



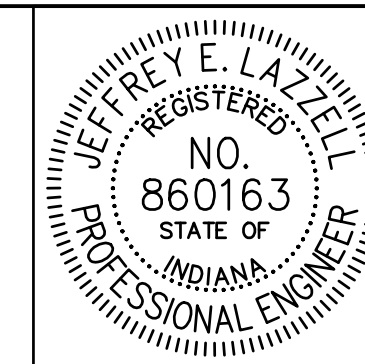
**LEGEND**

- |   |   |   |
|---|---|---|
| <ul style="list-style-type: none"> <li>④ Transverse Marking, Multi - Comp., Stop Line, White, 24"</li> <li>⑤ Transverse Marking, Thermoplastic, Stop Line, White, 24"</li> <li>⑥ Line, Thermoplastic, Solid, Yellow, 8"</li> <li>⑦ Transverse Marking, Thermoplastic, Crosshatch Line, Yellow, 12"</li> <li>⑧ Line, Thermoplastic, Solid, White, 4"</li> <li>⑨ Line, Thermoplastic, Broken, White, 5"</li> <li>⑩ Line, Thermoplastic, Broken, White, 4"</li> <li>⑪ Line, Thermoplastic, Dotted, White, 5"</li> <li>⑫ Line, Thermoplastic, Dotted, White, 4"</li> <li>⑬ Line, Thermoplastic, Solid, White, 8"</li> </ul> | <ul style="list-style-type: none"> <li>⑭ Line, Thermoplastic, Solid, White, 24"</li> <li>⑮ Transverse Marking, Thermoplastic, Crosswalk Line, White, 6"</li> <li>⑯ Transverse Marking, Thermoplastic, Crosswalk Line, White, 24"</li> <li>⑰ Transverse Marking, Thermoplastic, Yield, White, 27"</li> <li>⑱ Pavement Message Marking, Thermoplastic, Lane Indication Arrow</li> <li>⑲ Pavement Message Marking, Thermoplastic, Word (ONLY)</li> <li>⑳ Line, Thermoplastic, Solid, Yellow, 4"</li> <li>㉑ Line, Multi-Component, Solid, White, 4"</li> <li>㉒ Line, Multi-Component, Dotted, White, 4" (2' line, 6'gap)</li> <li>㉓ Line, Multi-Component, Solid, Yellow, 4"</li> </ul> | <ul style="list-style-type: none"> <li>㉔ Pavement Message Marking, Multi-Component, Lane Indication Arrow</li> <li>㉕ Line, Multi-Component, Broken, White, 4"</li> <li>㉖ Transverse Marking, Multi-Component, Crosswalk Line, White, 6"</li> <li>㉗ Line, Multi-Component, Dotted, Yellow, 4" (2' line, 6'gap)</li> <li>㉘ Line, Thermoplastic, Dotted, White 4" (2'line, 6'gap)</li> <li>㉙ Line, Thermoplastic, Dotted, Yellow, 4" (2'line, 6'gap)</li> <li>㉚ Line, Thermoplastic, Broken, Yellow, 4"</li> <li>㉛ Transverse Marking, Thermoplastic, Crosshatch Line, White, 24"</li> </ul> <p>➤ Traffic Flow Direction</p> |
|---|---|---|

File Name: p:\CSD\13-118\Road\Drawings\Phase III\Sign Mark\_Plan\dwg\_Plan.dwg Plot Date: 7/21/2019 Plotted By: VC Dobson



8440 Allison Pointe Boulevard, Suite 200  
Indianapolis, IN 46250  
Phone 317-895-2585  
www.ucindy.com

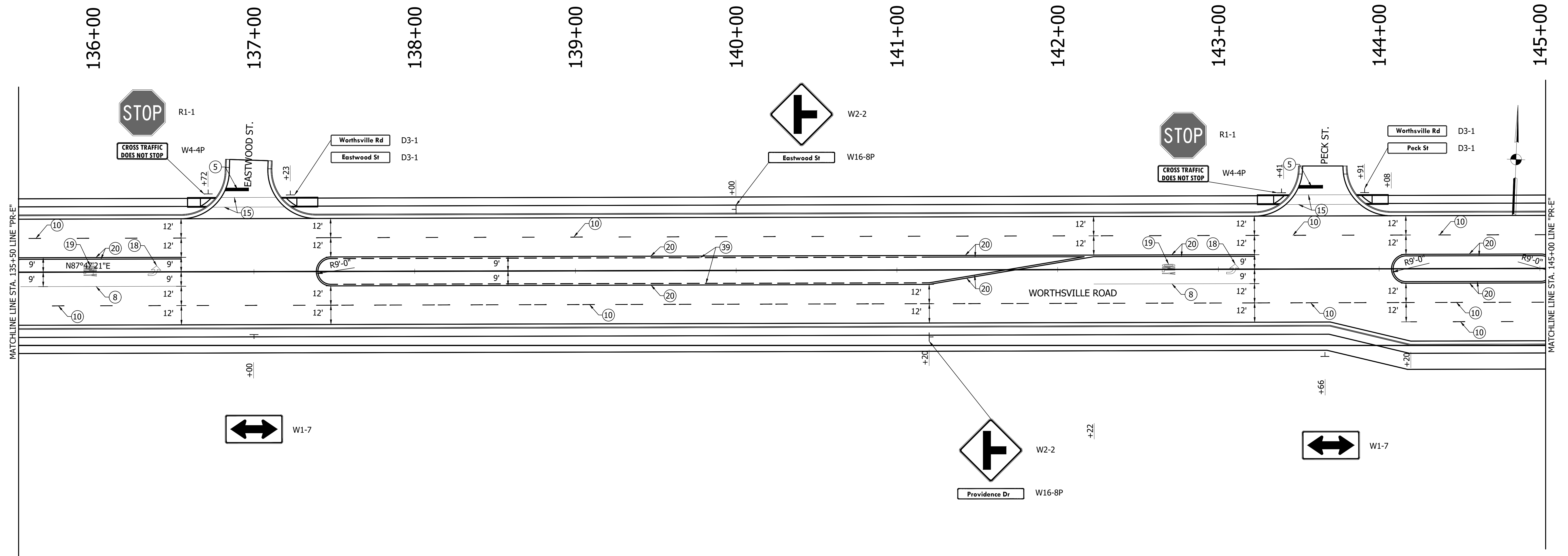


RECOMMENDED FOR APPROVAL: *Jeffrey E. LaZell* 7/1/19  
DESIGN ENGINEER DATE

DESIGNED: RBI DRAWN: VAD  
CHECKED: JEL CHECKED: RBI

INDIANA  
DEPARTMENT OF TRANSPORTATION  
PAVEMENT MARKING & SIGNING PLAN  
LINE "PR-E"

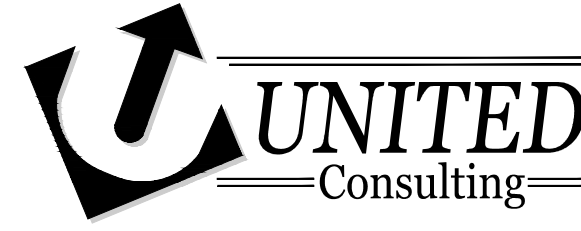
|                  |             |
|------------------|-------------|
| HORIZONTAL SCALE | BRIDGE FILE |
| 1" = 30'         | -           |
| VERTICAL SCALE   | DESIGNATION |
| N/A              | 1401610     |
| SURVEY BOOK      | SHEETS      |
| -                | 98 of 156   |
| CONTRACT         | PROJECT     |
| R-37985          | 1401610     |



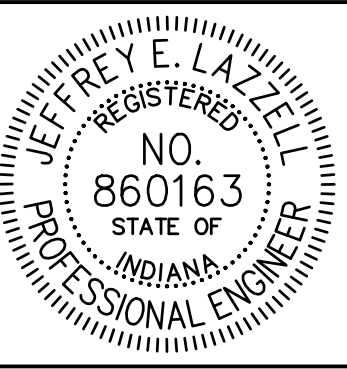
**LEGEND**

- ④ Transverse Marking, Multi - Comp., Stop Line, White, 24"
- ⑤ Transverse Marking, Thermoplastic, Stop Line, White, 24"
- ⑥ Line, Thermoplastic, Solid, Yellow, 8"
- ⑦ Transverse Marking, Thermoplastic, Crosshatch Line, Yellow, 12"
- ⑧ Line, Thermoplastic, Solid, White, 4"
- ⑨ Line, Thermoplastic, Broken, White, 5"
- ⑩ Line, Thermoplastic, Broken, White, 4"
- ⑪ Line, Thermoplastic, Dotted, White, 5"
- ⑫ Line, Thermoplastic, Dotted, White, 4"
- ⑬ Line, Thermoplastic, Solid, White, 8"
- ⑭ Line, Thermoplastic, Solid, White, 24"
- ⑮ Transverse Marking, Thermoplastic, Crosswalk Line, White, 6"
- ⑯ Transverse Marking, Thermoplastic, Crosswalk Line, White, 24"
- ⑰ Transverse Marking, Thermoplastic, Yield, White, 27"
- ⑱ Pavement Message Marking, Thermoplastic, Lane Indication Arrow
- ⑲ Pavement Message Marking, Thermoplastic, Word (ONLY)
- ⑳ Line, Thermoplastic, Solid, Yellow, 4"
- ㉑ Line, Multi-Component, Solid, White, 4"
- ㉒ Line, Multi-Component, Dotted, White, 4" (2' line, 6'gap)
- ㉓ Line, Multi-Component, Solid, Yellow, 4"
- ㉔ Pavement Message Marking, Multi-Component, Lane Indication Arrow
- ㉕ Line, Multi-Component, Broken, White, 4"
- ㉖ Transverse Marking, Multi-Component, Crosswalk Line, White, 6"
- ㉗ Line, Multi-Component, Dotted, Yellow, 4" (2' line, 6'gap)
- ㉘ Line, Thermoplastic, Dotted, White 4" (2'line, 6'gap)
- ㉙ Line, Thermoplastic, Dotted, Yellow, 4" (2'line, 6'gap)
- ㉚ Line, Thermoplastic, Broken, Yellow, 4"
- ㉛ Transverse Marking, Thermoplastic, Crosshatch Line, White, 24"
- ➡ Traffic Flow Direction

File Name: p:\CADD\13-418\Road\Draw\Plans\PAVE III\Sgn Mark Plan.dwg Plot Date: 7/11/2019 Plotted By: Vic Daliso



8440 Allison Pointe Boulevard, Suite 200  
 Indianapolis, IN 46250  
 Phone 317-895-2585  
 www.ucindy.com

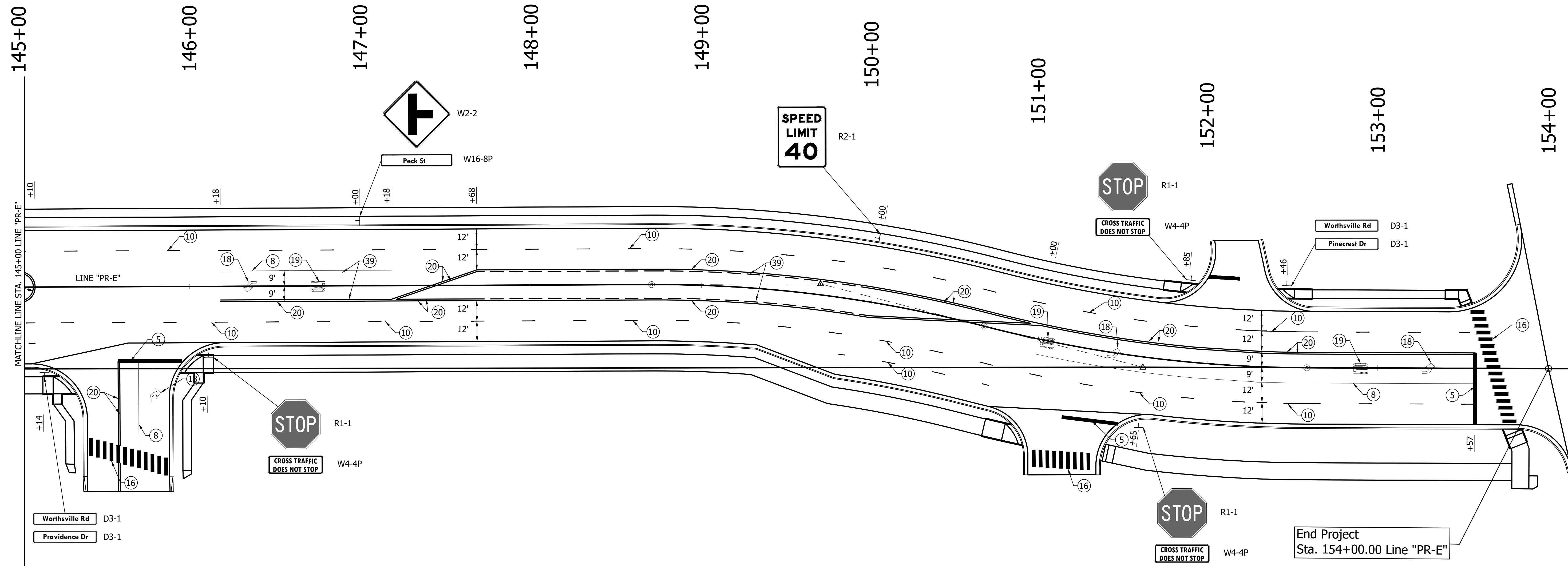


|                          |                           |          |         |
|--------------------------|---------------------------|----------|---------|
| RECOMMENDED FOR APPROVAL | <i>Jeffrey E. Lazzell</i> | DATE     | 7/11/19 |
| DESIGNED:                | RBI                       | DRAWN:   | VAD     |
| CHECKED:                 | JEL                       | CHECKED: | RBI     |

INDIANA  
 DEPARTMENT OF TRANSPORTATION  
 PAVEMENT MARKING & SIGNING PLAN  
 LINE "PR-E"

|                  |             |
|------------------|-------------|
| HORIZONTAL SCALE | BRIDGE FILE |
| 1" = 30'         | -           |
| VERTICAL SCALE   | DESIGNATION |
| N/A              | 1401610     |
| SURVEY BOOK      | SHEETS      |
| -                | 99 of 156   |
| CONTRACT         | PROJECT     |
| R-37985          | 1401610     |





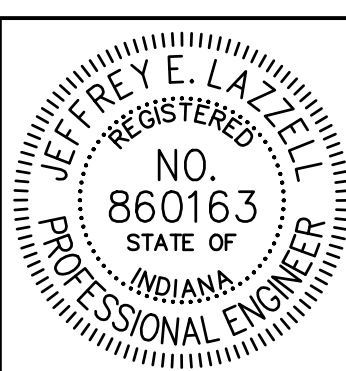
**LEGEND**

- ④ Transverse Marking, Multi - Comp., Stop Line, White, 24"
  - ⑤ Transverse Marking, Thermoplastic, Stop Line, White, 24"
  - ⑥ Line, Thermoplastic, Solid, Yellow, 8"
  - ⑦ Transverse Marking, Thermoplastic, Crosshatch Line, Yellow, 12"
  - ⑧ Line, Thermoplastic, Solid, White, 4"
  - ⑨ Line, Thermoplastic, Broken, White, 5"
  - ⑩ Line, Thermoplastic, Broken, White, 4"
  - ⑪ Line, Thermoplastic, Dotted, White, 5"
  - ⑫ Line, Thermoplastic, Dotted, White, 4"
  - ⑬ Line, Thermoplastic, Solid, White, 8"
  - ⑭ Line, Thermoplastic, Solid, White, 24"
  - ⑮ Transverse Marking, Thermoplastic, Crosswalk Line, White, 6"
  - ⑯ Transverse Marking, Thermoplastic, Crosswalk Line, White, 24"
  - ⑰ Transverse Marking, Thermoplastic, Yield, White, 27"
  - ⑱ Pavement Message Marking, Thermoplastic, Lane Indication Arrow
  - ⑲ Pavement Message Marking, Thermoplastic, Word (ONLY)
  - ⑳ Line, Thermoplastic, Solid, Yellow, 4"
  - ㉑ Line, Multi-Component, Solid, White, 4"
  - ㉒ Line, Multi-Component, Dotted, White, 4" (2' line, 6'gap)
  - ㉓ Line, Multi-Component, Solid, Yellow, 4"
  - ㉔ Pavement Message Marking, Multi-Component, Lane Indication Arrow
  - ㉕ Line, Multi-Component, Broken, White, 4"
  - ㉖ Transverse Marking, Multi-Component, Crosswalk Line, White, 6"
  - ㉗ Line, Multi-Component, Dotted, Yellow, 4" (2' line, 6'gap)
  - ㉘ Line, Thermoplastic, Dotted, White 4" (2'line, 6'gap)
  - ㉙ Line, Thermoplastic, Dotted, Yellow, 4" (2'line, 6'gap)
  - ㉚ Line, Thermoplastic, Broken, Yellow, 4"
  - ㉛ Transverse Marking, Thermoplastic, Crosshatch Line, White, 24"
- Traffic Flow Direction

File Name: p:\CSD\13-118\Road\Drawings\Phase III\Sign Mark\_Plan.dwg Plot Date: 7/21/2019 Plotted By: VC Dobson



8440 Allison Pointe Boulevard, Suite 200  
 Indianapolis, IN 46250  
 Phone 317-895-2585  
 www.ucindy.com



RECOMMENDED FOR APPROVAL: *Jeffrey E. Lazell* 7/1/19  
 DESIGN ENGINEER DATE

DESIGNED: JEL DRAWN: VAD  
 CHECKED: RBI CHECKED: RBI

INDIANA  
 DEPARTMENT OF TRANSPORTATION

PAVEMENT MARKING & SIGNING PLAN  
 LINE "PR-E"

|                  |             |
|------------------|-------------|
| HORIZONTAL SCALE | BRIDGE FILE |
| 1" = 30'         | -           |
| VERTICAL SCALE   | DESIGNATION |
| N/A              | 1401610     |
| SURVEY BOOK      | SHEETS      |
| -                | 100 of 156  |
| CONTRACT         | PROJECT     |
| R-37985          | 1401610     |